

Project:

Vimmelstorp

Description:

Lantmäteriet low resolution height data in combination with 5 m height data in the vicinity of the project area (5x5km)

Wind Sweden AB will not be liable for any damage arising in connection with the information provided in this report.

Licensed user:

Wind Sweden AB
 Åtrastigen 5A
 SE-311 38 Falkenberg
 +46 723 158788
 Mikael Palmqvist / mikael@wind-sweden.com
 Calculated:
 2019-06-19 14:41/3.3.247

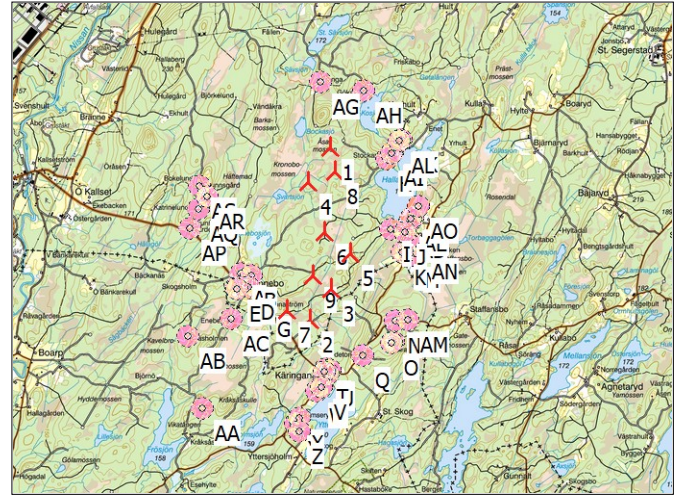
DECIBEL - Main Result

Calculation: Vimmelstorp_9xV126 @ 137m hh_Trailing edge serration (TES)

SVENSKA BESTÄMMELSER FÖR EXTERNT BULLER FRÅN LANDBASERADE VINDKRAFTVERK

Beräkningen är baserad på den av Statens Naturvårdsverk rekommenderad metod "Ljud från vindkraftverk", 2010 (NV dnr 382-6897-07 Rv)

All coordinates are in Swedish UTM 33-SWREF99 (SE)



WTGs

	Easting	Northing	Z	Row data/Description	WTG type			Power, rated [kW]	Rotor diameter [m]	Hub height [m]	Noise data		Wind speed [m/s]	LwA,ref [dB(A)]	Pure tones
					Valid	Manufact.	Type-generator				Creator	Name			
1	407341	6332902	184,8	1	Yes	VESTAS	V126-3.6 HTq-3600	3600	126,0	137,0	EMD	Mode PO1 - Measured - Mode PO1. With serrations - 11-2016	8,0	104,9	No
2	407000	6330064	170,0	2	Yes	VESTAS	V126-3.6 HTq-3600	3600	126,0	137,0	EMD	Mode PO1 - Measured - Mode PO1. With serrations - 11-2016	8,0	104,9	No
3	407350	6330568	170,6	3	Yes	VESTAS	V126-3.6 HTq-3600	3600	126,0	137,0	EMD	Mode PO1 - Measured - Mode PO1. With serrations - 11-2016	8,0	104,9	No
4	406980	6332332	180,0	4	Yes	VESTAS	V126-3.6 HTq-3600	3600	126,0	137,0	EMD	Mode PO1 - Measured - Mode PO1. With serrations - 11-2016	8,0	104,9	No
5	407669	6331149	180,0	5	Yes	VESTAS	V126-3.6 HTq-3600	3600	126,0	137,0	EMD	Mode PO1 - Measured - Mode PO1. With serrations - 11-2016	8,0	104,9	No
6	407242	6331510	180,0	6	Yes	VESTAS	V126-3.6 HTq-3600	3600	126,0	137,0	EMD	Mode PO1 - Measured - Mode PO1. With serrations - 11-2016	8,0	104,9	No
7	406627	6330223	174,8	7	Yes	VESTAS	V126-3.6 HTq-3600	3600	126,0	137,0	EMD	Mode PO1 - Measured - Mode PO1. With serrations - 11-2016	8,0	104,9	No
8	407420	6332499	185,0	8	Yes	VESTAS	V126-3.6 HTq-3600	3600	126,0	137,0	EMD	Mode PO1 - Measured - Mode PO1. With serrations - 11-2016	8,0	104,9	No
9	407055	6330793	175,9	9	Yes	VESTAS	V126-3.6 HTq-3600	3600	126,0	137,0	EMD	Mode PO1 - Measured - Mode PO1. With serrations - 11-2016	8,0	104,9	No

Calculation Results

Sound level

Noise sensitive area

No.	Name	Easting	Northing	Z	Imission height [m]	Demands Noise [dB(A)]	Sound level From WTGs [dB(A)]	Demands fulfilled ?
A	GISLAVED TRONEBO 1:13	405869	6330820	180,0	1,5	40,0	37,9	Yes
B	GISLAVED TRONEBO 1:7	406038	6330787	177,8	1,5	40,0	39,4	Yes
C	GISLAVED TRONEBO 1:8	405975	6330607	182,2	1,5	40,0	39,6	Yes
D	GISLAVED TRONEBO 1:8	405991	6330591	181,7	1,5	40,0	39,6	Yes
E	GISLAVED TRONEBO 1:9	405809	6330564	180,6	1,5	40,0	37,9	Yes
F	GISLAVED TRONEBO 1:9	405792	6330584	180,1	1,5	40,0	37,7	Yes
G	GISLAVED SKATEKULL 1:4	406269	6330307	170,0	1,5	40,0	44,6	No
H	GISLAVED KULLA 1:4	408284	6332714	165,0	1,5	40,0	38,1	Yes
I	GISLAVED VIMMELSTORP 1:10	408337	6331554	165,0	1,5	40,0	39,4	Yes
J	GISLAVED VIMMELSTORP 1:11	408576	6331499	170,0	1,5	40,0	37,5	Yes
K	GISLAVED VIMMELSTORP 1:5	408525	6331175	166,1	1,5	40,0	38,2	Yes
L	GISLAVED VIMMELSTORP 1:5	408571	6331151	167,4	1,5	40,0	37,8	Yes
M	GISLAVED VIMMELSTORP 1:6	408686	6331129	171,3	1,5	40,0	37,1	Yes
N	HYLTE KÄRINGANÄS 1:5	408419	6330047	196,1	1,5	40,0	36,7	Yes
O	HYLTE KÄRINGANÄS 1:8	408352	6329685	205,0	1,5	40,0	35,7	Yes
P	HYLTE KÄRINGANÄS 1:14	408395	6329691	205,0	1,5	40,0	35,5	Yes
Q	HYLTE KÄRINGANÄS 1:9	407884	6329479	192,2	1,5	40,0	37,1	Yes
R	HYLTE KÄRINGANÄS 1:16	407259	6329251	174,1	1,5	40,0	37,8	Yes
S	HYLTE KÄRINGANÄS 1:15	407340	6329235	175,0	1,5	40,0	37,4	Yes
T	HYLTE KÄRINGANÄS 1:6	407251	6329204	174,6	1,5	40,0	37,4	Yes
U	HYLTE KÄRINGANÄS 1:17	407305	6329169	175,0	1,5	40,0	36,9	Yes
V	HYLTE KÄRINGANÄS 1:12	407205	6328954	175,0	1,5	40,0	35,7	Yes
W	HYLTE KÄRINGANÄS 1:18	407123	6328878	174,4	1,5	40,0	35,2	Yes
X	HYLTE HOLMSERYD 1:2	406826	6328447	170,3	1,5	40,0	32,5	Yes
Y	HYLTE HOLMSERYD 1:3	406772	6328345	170,0	1,5	40,0	31,9	Yes
Z	HYLTE YTTERSJÖHOLM 1:17	406827	6328217	170,8	1,5	40,0	31,3	Yes
AA	HYLTE KRÅKSÅS 1:11	405230	6328601	175,0	1,5	40,0	29,8	Yes

To be continued on next page...

Project:

Vimmelstorp

Description:

Lantmäteriet low resolution height data in combination with 5 m height data in the vicinity of the project area (5x5km)

Wind Sweden AB will not be liable for any damage arising in connection with the information provided in this report.

Licensed user:

Wind Sweden AB

Åtrastigen 5A

SE-311 38 Falkenberg

+46 723 158788

Mikael Palmqvist / mikael@wind-sweden.com

Calculated:

2019-06-19 14:41/3.3.247

DECIBEL - Main Result

Calculation: Vimmelstorp_9xV126 @ 137m hh_Trailing edge serration (TES)

...continued from previous page

Noise sensitive area

No.	Name	Easting	Northing	Z [m]	Emission height [m]	Demands Noise [dB(A)]	Sound level From WTGs [dB(A)]	Demands fulfilled ? Noise
AB	Boarp Gräsholmen	404991	6329791	175,0	1,5	40,0	32,1	Yes
AC	HYLTE KRÅKSÅS 1:5	405700	6330079	172,9	1,5	40,0	36,8	Yes
AD	GISLAVED VIMMELSTORP 3:1	408631	6331620	170,0	1,5	40,0	37,2	Yes
AE	GISLAVED VIMMELSTORP 3:4	408671	6331719	178,5	1,5	40,0	36,8	Yes
AF	GISLAVED VIMMELSTORP 3:2	408709	6331746	174,2	1,5	40,0	36,5	Yes
AG	GISLAVED TÅNGA 1:1	407180	6333982	181,6	1,5	40,0	35,1	Yes
AH	GISLAVED GÖKABO 1:1	407898	6333841	174,4	1,5	40,0	35,1	Yes
AI	GISLAVED KULLA 1:5	408352	6332803	165,0	1,5	40,0	37,4	Yes
AJ	GISLAVED KULLA 1:6	408380	6332815	165,0	1,5	40,0	37,4	Yes
AK	GISLAVED SONNARYD 2:2	408522	6333027	174,2	1,5	40,0	35,8	Yes
AL	GISLAVED SONNARYD 2:3	408489	6333006	172,9	1,5	40,0	36,1	Yes
AM	HYLTE KÄRINGANÅS 1:13	408633	6330054	190,0	1,5	40,0	35,5	Yes
AN	GISLAVED VIMMELSTORP 1:8	408810	6331267	175,6	1,5	40,0	36,2	Yes
AO	GISLAVED VIMMELSTORP 2:8	408808	6331934	170,4	1,5	40,0	35,7	Yes
AP	Brunnsgård 2	405026	6331563	171,4	1,5	40,0	32,7	Yes
AQ	GISLAVED TRONEBO 1:15	405169	6331887	180,0	1,5	40,0	33,1	Yes
AR	GISLAVED TRONEBO 1:14	405304	6332088	188,6	1,5	40,0	33,6	Yes
AS	GISLAVED FÄLLINGE 8:4	405189	6332264	195,0	1,5	40,0	32,8	Yes

Distances (m)

NSA	WTG								
	1	2	3	4	5	6	7	8	9
A	2550	1360	1502	1876	1830	1537	965	2286	1186
B	2484	1203	1330	1810	1671	1404	815	2200	1017
C	2671	1160	1376	1996	1779	1556	757	2381	1096
D	2676	1138	1359	2002	1768	1552	735	2384	1083
E	2795	1292	1541	2121	1950	1717	886	2518	1267
F	2788	1315	1558	2113	1960	1720	910	2513	1280
G	2808	770	1112	2146	1634	1547	368	2476	924
H	962	2945	2340	1359	1682	1592	2992	890	2281
I	1676	2002	1395	1564	781	1096	2167	1317	1491
J	1869	2131	1539	1800	972	1334	2330	1529	1677
K	2094	1887	1323	1930	856	1326	2123	1725	1519
L	2140	1910	1353	1981	902	1377	2154	1773	1558
M	2225	1994	1449	2087	1017	1493	2250	1865	1665
N	3052	1419	1189	2700	1333	1878	1801	2648	1555
O	3372	1404	1336	2981	1615	2136	1807	2964	1706
P	3380	1444	1364	2996	1629	2154	1846	2972	1735
Q	3466	1060	1213	2993	1684	2130	1461	3055	1554
R	3652	853	1320	3094	1942	2259	1159	3252	1555
S	3667	896	1333	3118	1942	2277	1218	3265	1584
T	3699	896	1368	3140	1989	2306	1195	3299	1601
U	3733	946	1400	3180	2013	2342	1253	3332	1643
V	3950	1129	1621	3385	2244	2556	1394	3552	1845
W	4030	1192	1705	3457	2336	2635	1434	3633	1916
X	4485	1626	2185	3888	2830	3091	1787	4095	2357
Y	4592	1734	2297	3992	2944	3200	1884	4204	2464
Z	4713	1855	2408	4118	3051	3319	2016	4323	2586
AA	4791	2296	2892	4121	3527	3537	2141	4471	2852
AB	3899	2027	2484	3227	3003	2832	1692	3638	2294
AC	3265	1300	1721	2591	2241	2104	938	2969	1532
AD	1819	2254	1658	1798	1071	1393	2443	1496	1780
AE	1780	2352	1752	1799	1153	1444	2533	1474	1863
AF	1791	2398	1798	1826	1199	1486	2580	1493	1909
AG	1092	3922	3418	1662	2875	2473	3799	1502	3191
AH	1092	3882	3319	1766	2702	2422	3835	1425	3162
AI	1016	3055	2449	1451	1789	1704	3104	980	2392
AJ	1043	3078	2472	1481	1811	1731	3129	1011	2417
AK	1188	3331	2724	1691	2063	1985	3384	1222	2673
AL	1153	3297	2691	1653	2030	1948	3348	1183	2637
AM	3127	1633	1382	2815	1459	2014	2013	2729	1742
AN	2198	2173	1619	2117	1147	1587	2420	1857	1818
AO	1758	2601	1998	1871	1383	1622	2772	1499	2092

To be continued on next page...

Project:

Vimmelstorp

Description:

Lantmäteriet low resolution height data in combination with 5 m height data in the vicinity of the project area (5x5km)

Wind Sweden AB will not be liable for any damage arising in connection with the information provided in this report.

Licensed user:

Wind Sweden AB

Åtrastigen 5A

SE-311 38 Falkenberg

+46 723 158788

Mikael Palmqvist / mikael@wind-sweden.com

Calculated:

2019-06-19 14:41/3.3.247

DECIBEL - Main Result

Calculation: Vimmelstorp_9xV126 @ 137m hh_Trailing edge serration (TES)

...continued from previous page

WTG

NSA	1	2	3	4	5	6	7	8	9
AP	2674	2479	2528	2100	2675	2217	2088	2570	2170
AQ	2397	2584	2549	1865	2607	2107	2212	2333	2180
AR	2194	2641	2549	1694	2545	2022	2287	2156	2178
AS	2245	2850	2747	1792	2719	2187	2497	2243	2376

Project:
Vimmelstorp

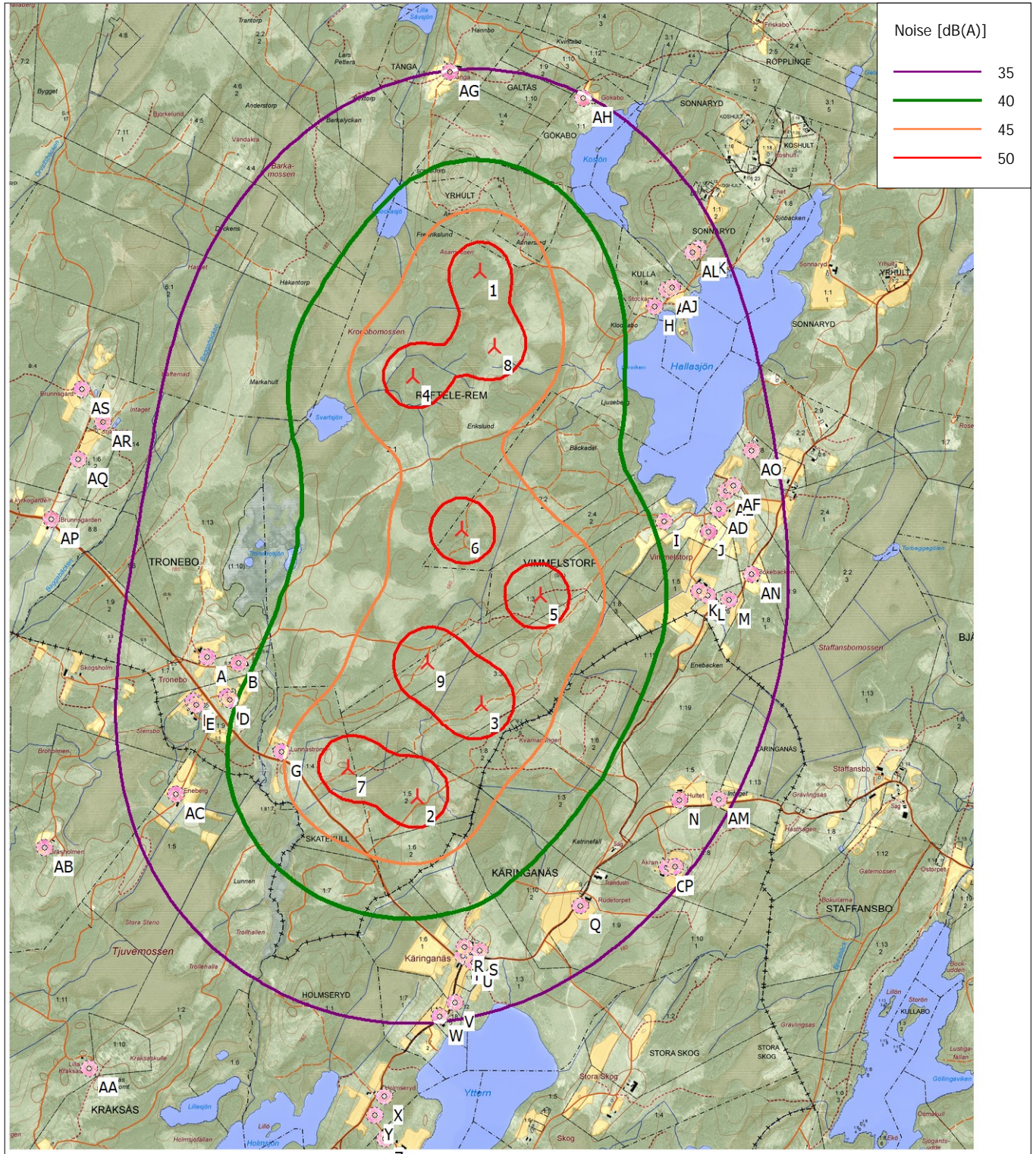
Description:
Lantmäteriet low resolution height data in combination with 5 m height data in the vicinity of the project area (5x5km)

Wind Sweden AB will not be liable for any damage arising in connection with the information provided in this report.

Licensed user:
Wind Sweden AB
Åtrastigen 5A
SE-311 38 Falkenberg
+46 723 158788
Mikael Palmqvist / mikael@wind-sweden.com
Calculated:
2019-06-19 14:41/3.3.247

DECIBEL - Map 8,0 m/s

Calculation: Vimmelstorp_9xV126 @ 137m hh_Trailing edge serration (TES)



0 500 1000 1500 2000 m

Map: Fastighetskartan , Print scale 1:31 000, Map center Swedish UTM 33-SWREF99 (SE) East: 407 545 North: 6 331 238

▲ New WTG

■ Noise sensitive area

Noise calculation model: Swedish 2009. Wind speed: 8,0 m/s
Height above sea level from active line object